

**D'Mak**

# PRODUCT CATALOGUE



## INTRODUCTION

*Established in the year **2015**, We "**D'MAK ENERGIA PVT LTD.**" are engaged in Manufacturing of Led Lights and Electrical Control Panel.*

*We design and produce innovative **LED** products of excellent quality, competitive price supported by a nationwide network of sales and services.*

*We are highly appraised by our clients and the markets for our credible quality after-service. Therefore, our products are widely applauded for having various features like excellent lighting, power saving, durability, minimum maintenance, low energy consumption and high corrosion resistance.*

*Owing to having features like these, our products are used in various Offices, Households, Garden, Industries & etc.*

***D'MAK ENERGIA PVT LTD.** is a leading, full-spectrum provider of professional and architectural lighting solutions. Built on over a century of expertise in led lights and luminaries, we are your best one-stop service for differentiated product solution provider.*



**(DM-101) Glow Premia Panel**

**(DM-102) Glow Premia Surface**

WATT	CUTOUT	OUTER	COLOUR
8W	105 mm	120 mm	WH/NW/WW/3 IN 1
12W	125 mm	145 mm	WH/NW/WW
15W	150 mm	170 mm	WH/NW/WW/3 IN 1
18W	180 mm	190 mm	WH/NW/WW
22W	205 mm	220 mm	WH/NW/WW/3 IN 1
30W	280 mm	300 mm	WH
40W	595 mm	595 mm	WH/NW

WATT	OUTER	COLOUR
8W	110 mm	WH/NW/WW
15W	170 mm	WH/NW/WW
22W	220mm	WH/NW/WW
30W	300 mm	WH
40W	595 mm	WH/NW

\* 40 W (2 X 2) available in Sq Shape



**(DM-103) Nexus Rimless Panel**

**(DM-104) Nexus Rimless Surface**

WATT	CUTOUT	OUTER	COLOUR
8W	70 mm	85 mm	WH/NW
15W	120 mm	145 mm	WH/NW
22W	150 mm	175 mm	WH/NW

WATT	OUTER	COLOUR
8W	85 mm	WH/NW
15W	145 mm	WH/NW
22W	175 mm	WH/NW



**(DM-105) Passion Deep AL**

WATT	CUTOUT	OUTER	COLOUR
12W	105 mm	120 mm	WH / NW / WW / 3 in 1
18W	145 mm	150 mm	WH / NW / WW / 3 in 1
24W	165 mm	175 mm	WH



**(DM-106) Eco Deep PC**

WATT	CUTOUT	OUTER	COLOUR
8W	105 mm	120 mm	WH / NW / WW / 3 in 1
15W	130 mm	150 mm	WH / NW / WW / 3 in 1
22W	155 mm	175 mm	WH / NW / WW / 3 in 1



**(DM-107) Rio Deep Reflector Panel**

WATT	CUTOUT	OUTER	COLOUR
12W	110 mm	120 mm	WH / NW / WW / 3 in 1
18W	145 mm	150 mm	WH / NW / WW / 3 in 1



**(DM-108) Rio Deep Reflector Surface**

WATT	COLOUR
12W	WH / NW / WW / 3 in 1
18W	WH / NW / WW / 3 in 1

\* Reflector available : Rose Gold, Shining Black



**(DM-109) Galaxy Panel**

WATT	CUTOUT	OUTER	COLOUR
4W	65 mm	85 mm	WH / NW / WW
8W	105 mm	120 mm	WH / NW / WW / 3 IN 1
15W	155 mm	170 mm	WH / NW / WW / 3 IN 1
22W	205 mm	220 mm	WH / NW / WW / 3 IN 1
30W	275 mm	300 mm	WH



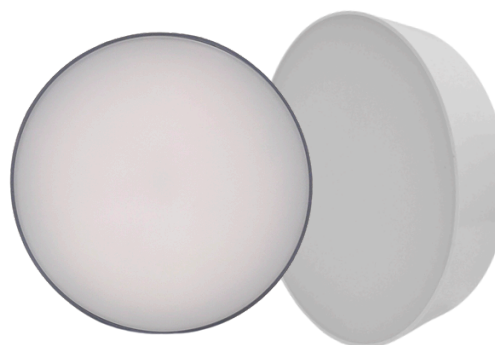
**(DM-110) Galaxy Surface**

WATT	OUTER	COLOUR
8W	110 mm	WH / NW / WW
15W	160 mm	WH / NW / WW
22W	220 mm	WH / NW / WW
30W	295 mm	WH



**(DM-111) Shine PC Panel**

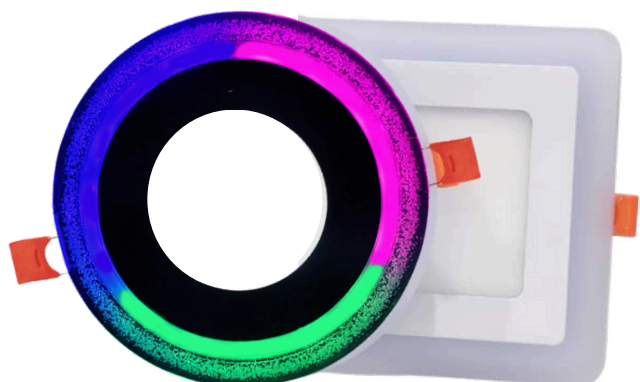
WATT	CUTOUT	OUTER	COLOUR
8W	100 mm	120 mm	WH / NW / WW / 3 in 1
15W	125 mm	145 mm	WH / NW / WW / 3 in 1
15W	150 mm	170 mm	WH / NW / WW / 3 in 1
22W	150 mm	170 mm	WH / NW / WW / 3 in 1



**(DM-112) Moon PC Surface**

WATT	OUTER	COLOUR
8W	100 mm	WH / NW / WW
15W	125 mm	WH / NW / WW
22W	150 mm	WH / NW / WW

\*Also Ring available for surface



**(DM-113) Star Colour Panel + Jelly Panel**

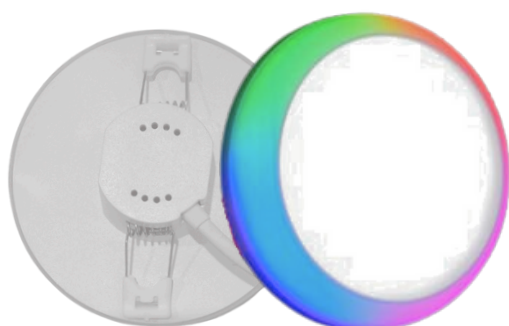
WATT	CUTOUT	OUTER	COLOUR
3+3W	65 mm	100 mm	WH+PGB
6+3W	100 mm	145 mm	WH+PGB
12+4W	150 mm	195 mm	WH+PGB

\* 3+3W & 6+3W RD PGB also available in Jelly Design



**(DM-114) Star Colour Surface**

WATT	OUTER	COLOUR
3+3W	100 mm	WH+PGB
6+3W	145 mm	WH+PGB
12+4W	195 mm	WH+PGB



**(DM-115) Nova Color Junction**

WATT	CUTOUT	COLOUR
7+7 W	50 mm	WH+PGB/BL/WW/PK/GREEN/RED
12+12 W	50 mm	WH+PGB/BL/WW/PK/GREEN/RED



**(DM-116) Flexa Adjustable**

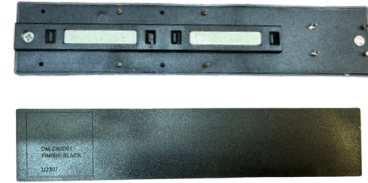
WATT	SIZE(CUTOUT)	OUTER	COLOUR
9W	50-70 mm	85 mm	WH / NW / 3 in 1
18W	50-100 mm	120 mm	WH / NW / 3 in 1
24W	50-150 mm	170 mm	WH / 3 in 1



## (DM-201) Ultra Slim Surface Mounted Track

ITEM	MATERIAL
1M	Aluminum
2M	Aluminum
Track Cover	PC Dust proof

\* Input Voltage: DC 48V



## (DM-202) Connector for Surface Mounted

ITEM	APPLICATION
Thin straight connector	For straight track connector
Thin 90 connector	For 90 track connector
Cover box	To cover the input cable

\* Use in Surface track



## (DM-203) Recessed Mounted Track Patti

ITEM	MATERIAL	SIZE
1M	Aluminum	30*27.6mm
2M	Aluminum	30*27.6mm
3M	Aluminum	30*27.6mm
Spring	Iron	

\* Input Voltage: DC 48V



## (DM-204) Connector for Recessed Mounted

ITEM	APPLICATION
Thick straight connector	Straight track connector
Thick 90 connector	90 track connector for same surface
Thick 90 connector	90 track connector for wall to ceiling

\* Use in Recessed Track



## (DM-205) Power Supply

WATT	MATERIAL
100W	Alum + PC + Copper
200W	Alum + PC + Copper



## (DM-206) Magnetic Linea Light

WATT	SIZE
6W	L158*W26*H25mm
12W	L273*W26*H25mm
18W	L387*W26*H25mm
24W	L500*W26*H25mm

\* CCT : 4000K



**(DM-207) Magnetic Profile Light**

WATT	SIZE
12W	L273*W26*H25mm
18W	L387*W26*H25mm
24W	L615*W26*H25mm

\* CCT : 4000K



**(DM-208) Magnetic Track Light**

WATT	SIZE
12W	Φ 45*110mm
20W	Φ 55*135mm
30W	Φ 65*135mm

\* CCT : 4000K



**(DM-209) Magnetic Foldable Linea**

WATT	SIZE
6W	L135*W33*H50mm
12W	L250*W33*H50mm
18W	L365*W33*H50mm

\* CCT : 4000K



**(DM-210) Magnetic Hanging Light**

WATT	SIZE
12W	Φ40*300mm

\* CCT : 4000K



**(DM-211) Corner Light with Connector**

WATT	SIZE	APPLICATION
15W	165*W137*H25mm	Useful for corner track
20W	280*W255*H25mm	Useful for 90 track

\* CCT : 4000K



**(DM-212) Straight Light with Connector**

WATT	SIZE	APPLICATION
18W	L387*W26*H25mm	Useful for 2 straight track

\* CCT : 4000K

\* This light doesn't need additional connector for power supply from 1 track to 2 track





## (DM-301) Aqua Button

WATT	BODY COLOUR	COLOUR	CUTOUT
1W	WH	WH / WW / BL / PK / GR	25 mm
1W	BK	WW	25 mm
1W	BK+RG	WW	25 mm
3W	WH	WH / WW / BL / PK / GR	28 mm
3W	BK+RG	WW	28 mm



## (DM-302) Crown Button

WATT	BODY COLOUR	COLOUR	CUTOUT
3W	Rose Gold	WH / NW / WW	28 mm
3W	Black	WH / NW / WW	28 mm
3W	White	WH / NW / WW	28 mm



## (DM-303) Alto PC COB

WATT	CUTOUT	OUTER	COLOUR
3W	55 mm	70 mm	WH / WW / NW / BL / PK / RED / GR / RGB / 3 in 1
6W	70 mm	90 mm	WH / WW / BL / PK / GR
9W	85 mm	115 mm	WH / WW



## (DM-304) Luster AL COB

WATT	CUTOUT	COLOUR
3W	55 mm	WH / WW / NW
7W	70 mm	WH / WW / NW
12W	70 mm	WH / WW / NW
18W	90 mm	WH / WW / NW
24W	115 mm	WH / WW / NW
30W	115 mm	WH / WW / NW
50W	135 mm	WH / WW / NW



**(DM-305) Delta COB**

WATT	CUTOUT	COLOUR
7W	55 mm	WH / WW / NW / 3in1
12W	75 mm	WH / WW / NW / 3in1
18W	80 mm	WH / WW / NW / 3in1



**(DM-306) Glitter COB**

WATT	CUTOUT	COLOUR
7W	55 mm	WH / WW / NW / 3in1
12W	70 mm	WH / WW / NW / 3in1
18W	80 mm	WH / WW / NW / 3in1

**\*Dimmable & Tunable also available**



**(DM-307) Creta COB**

WATT	CUTOUT	COLOUR
7W	60 mm	WH / WW / NW / 3in1
12W	75 mm	WH / WW / NW / 3in1
18W	85 mm	WH / WW / NW / 3in1



**(DM-308) Lucent COB**

WATT	CUTOUT	COLOUR
7W	55 mm	WH / WW / NW / 3in1
12W	70 mm	WH / WW / NW / 3in1
18W	85 mm	WH / WW / NW / 3in1



**(DM-309) Neo COB**

WATT	CUTOUT	COLOUR
12W	55 mm	WH/NW/WW
18W	75 mm	WH/NW/WW
24W	95 mm	WH/NW/WW



**(DM-310) Mudo COB**

WATT	CUTOUT	COLOUR
12W	75 mm	3in1



**(DM-311) Magic COB**

WATT	CUTOUT	COLOUR
7W	55 mm	WH/NW/WW
12W	75 mm	WH/NW/WW



**(DM-312) Curve COB**

WATT	CUTOUT	COLOUR
12W	45 mm	WH/NW/WW



**(DM-313) Flora COB**

WATT	BODY COLOUR	CUTOUT	COLOUR
12W	RG/ SB/ WH	75 mm	WH/NW/WW



**(DM-314) Bullet COB**

WATT	CUTOUT	COLOUR
7W	35 mm	WH/NW/WW/3in1
12W	55 mm	WH/NW/WW/3in1



## (DM-315) Titan Pull Out

WATT	CUTOUT	COLOUR
12W	75 mm	NW



## (DM-316) Prisma Double Pull-Out

WATT	CUTOUT	COLOUR
2*7W	126*65 mm	WH/NW/WW
2*12W	178*88 mm	WH/NW/WW



## (DM-317) Linea COB

MODEL	WATT	CUTOUT	COLOUR
3 EYE	6W	85*35 mm	WH / NW / WW
5 EYE	10W	135*35 mm	WH / NW / WW



## (DM-318) XL Linea COB

WATT	MODEL	CUTOUT	COLOUR
12W	3 EYE	128*50 mm	WH/NW/WW
16W	4 EYE	85*85 mm	WH/NW/WW
20W	5 EYE	206*50 mm	WH/NW/WW

\* WH colour available on order basis



## (DM-319) Neo 360 Conceal

WATT	COLOUR	CUTOUT
7W	WH/NW/WW	38 mm



## (DM-320) Ornate Double COB

WATT	CUTOUT	COLOUR
2*7W	55*115 mm	WH/NW/WW
2*12W	75*240 mm	WH/NW/WW



**(DM-321) Plasma Cylinder Movable Cylinder COB**

WATT	COLOUR	WATT	COLOUR
7W	WH / WW / NW / 3in1	12W	WH / WW / NW
12W	WH / WW / NW / 3in1		
18W	WH / WW / NW		

\* Reflector available : Rose Gold, Shining Black



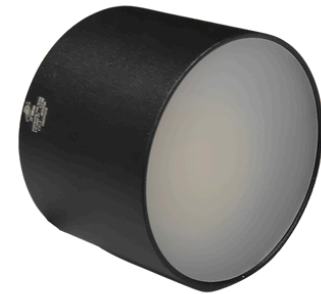
**(DM-322) Nova Shiny Cylinder**

WATT	COLOUR
12W	WH / WW / NW / 3in1



**(DM-323) Luxa IP65 cylinder**

WATT	COLOUR
12W	WH / WW / NW
18W	WH / WW / NW



**(DM-324) Luma Rimless Cylinder**

WATT	CUTOUT	COLOUR
12W	70*50 mm	WH/NW
18W	90*50 mm	WH/NW
24W	120*50 mm	WH/NW



**(DM-325) Twist Cylinder**

WATT	COLOUR
12W	WH / NW / WW



**(DM-326) Lumos 360° Cylinder**

WATT	COLOUR
7W	WH / NW / WW



**(DM-327) Oreo Wall**

WATT	COLOUR
12W	WH/NW/WW



**(DM-328 ) Platinum Wall/Track Light**

WATT	COLOUR
12W	WH/NW/WW



**(DM-329) Glanza Track Light | Track Patti**

WATT	COLOUR	METER
12W	WH / WW / NW	1 M
20W	WH / WW / NW	2 M
30W	WH / WW / NW	I Jointer L Jointer



**(DM-330) Glanza Wall Light**

WATT	COLOUR
3W	WH / WW / NW
6W	WH / WW / NW
9W	WH / WW / NW
12W	WH / WW / NW
20W	WH / WW / NW
30W	WH / WW / NW



**(DM-401(A)) ATOM SMPS**  
(100% Output)



**(DM-401(B)) Orbit SMPS**  
(80% Output)

Available in 2A , 3A , 5A , 10A , 12.5A , 16.5A , 25A , 33.3A

\* Operating Voltage : 12V



**(DM-402) SPARK WP Driver**

Available in 2A , 3A , 5A , 10A

\* Operating Voltage : 12V



**(DM-403(A)) Brite Strip**

MODEL	WIDTH	COLOUR
2835 - 120L	5 mm	WH / NW / WW
2835 - 120L	8 mm	WH / NW / WW / BL / PK / RED / GR / AMBER / ICE-BLUE/ 3in1
2835 - 240L	10 mm	WH / NW / WW / BL / PK / RED / GR / AMBER / ICE-BLUE
2835 - 180L		3in1
5050 - 120L		RGB
Neon		All Color

**(DM-403(B)) Fusion Strip (Heavy)**

MODEL	WIDTH	COLOUR
2835 - 240L	10 mm	WH /NW/ WW



**(DM-404) LED Profile Housing**

SIZE	DEPTH	TYPE
5 mm	5mm	Conceal / Surface
10 mm	10mm	Conceal / Surface
17mm	6mm	Conceal / Surface
25 mm	6mm	Conceal / Surface
35 mm	12mm	Conceal / Surface
50 mm	35mm	Conceal / Surface
17 mm		Corner Profile

17 mm in BK Patti & Diifuser Black OR White

# LED ROPE LIGHT



## (DM-405) LED Rope Light Premium

MODEL	COLOUR
2835 Wireless	WH / WW / BL / RED / GR / PK / AMBER / ICE-BLUE / 6 COLOR RGB
5050	16 COLOR RGB

**\* Rope cord for each model available**

### AVAILABLE COLOUR

- WARM WHITE
- WHITE
- RED
- GREEN
- BLUE
- PINK
- AMBER
- ICE BLUE
- RGB





**(DM-501) Blossom Spike (IP65)**

WATT	COLOUR
3W	WW/BL/RED/GR
5W	WW/BL/RED/GR/RGB
9W	WW/BL/RED/GR
12W	WW / RGB



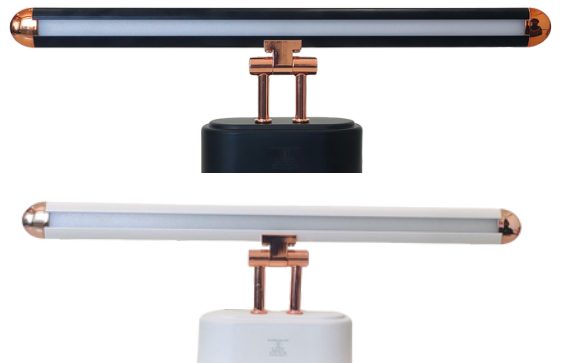
**(DM-502) LED Mirror Light**

WATT	COLOUR	TYPE
6W	WH/WW	SLIM / CURVE
12W	WH/WW	SLIM / CURVE



**(DM-503) LED Mirror Light**

WATT	COLOUR
16+2W	3 IN 1



**(DM-504) LED Mirror Light**

WATT	COLOUR
6W	3 IN 1
12W	3 IN 1



**(DM-505) Crest K Light**

**(DM-506) LED Study Lamp Light**

WATT	COLOUR
5	WW
10	WW

WATT	COLOUR
3	WW/ WH



**(DM-507) Alfresco Bulkhead**

**(DM-508) Vertex Junction**

WATT	COLOUR
9	WH/WW
18	WH/WW

WATT	COLOUR
3	WH/WW/BL/PK/RED/GR/3in1/RGB
7	WH/WW/BL/PK/RED/GR/3in1/RGB

# Extended Range



## (DM-510) LED Foot Light

MODEL	COLOUR	TYPE
1 M	WW	Conceal
2 M	WW	Conceal / Surface
4 M	WW	Conceal / Surface
6 M	WW	Conceal



## (DM-509(A))Pivot Striker

WATT	COLOUR
3	WH/WW/BL/PK/ RED/GR

## (DM-509(B)) Pivot Striker IP65

WATT	COLOUR
3	WW
6	WW



## (DM-511) LED Wall Cylinder Light

WATT	COLOUR
5	WW
10	WW



## (DM-512) LED Surface COB Light

WATT	COLOUR	BODY COLOUR
3	WW	BK / WH / WOODEN



## (DM-513) LED Tube Light

WATT	COLOUR	LENGTH
20W	WH	4FT
36W	WH	4FT



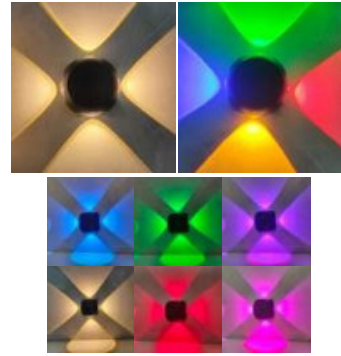
## (DM-514) LED Cabinet Light

SIZE	COLOUR
1FT	WH/WW/NW
2FT	WH/WW/NW
3FT	WH/WW/NW
4FT	WH/WW/NW



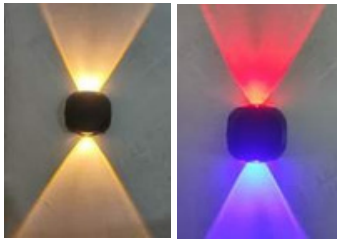
## (DM-601) Way Up-Down

ITEM	COLOUR
1*1	WW / RGB / RGB Auto
2*2	WW / RGB / RGB Auto
3*3	WW / RGB / RGB Auto
4*4	WW / RGB / RGB Auto



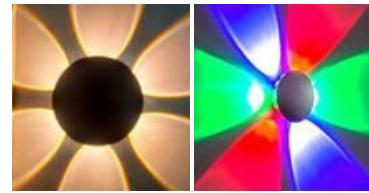
## (DM-602) 4 Way Ball

ITEM	COLOUR
4 Way Ball	WW
4 Way Ball	RGB Fix
4 Way Ball	RGB Auto
4 Way Ball	3in1



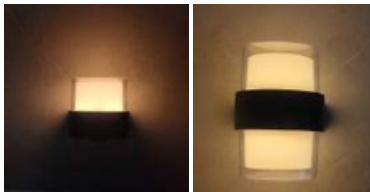
## (DM-603) 2 Way Ball

ITEM	COLOUR
2 Way Ball	WW
2 Way Ball	RGB Fix



## (DM-604) 6 Way Flower

ITEM	COLOUR
6 WAY FLOWER	WW
6 WAY FLOWER	RGB Fix



## (DM-605) Wall Up-Down

ITEM	COLOUR
Wall Up	WW
Wall Up-Down	WW



## (DM-606) lifa Award

ITEM	COLOUR
lifa Award	WW



# Vista Street Light

(DM-701)

# Optix Street Light

(DM-702)

<b>Wattage</b>	24W	36W	50W	72W	100W	150W
<b>I/P Voltage Range</b>	AC 85-300V@50Hz					
<b>Color Temperature</b>	3000-6500 K					
<b>CRI</b>	>80					
<b>Lumens</b>	Up to 140 lumens/Watt					
<b>Ingress Protection</b>	IP65					
<b>Surge Protection</b>	Internal surge upto 6kv. External 10kv as per Required					
<b>Operation Temp</b>	-10° to 50° C					
<b>Housing</b>	Die Cast Aluminum					
<b>Protection</b>	Over Voltage Protection , Above 320V Auto Cutoff Short Circuit Protection , Over Temperature Protection					
<b>Power Factor</b>	>0.90					
<b>Warranty</b>	2 Years					

## Applications



Streets



High Way



Petrol Pump



Railway Station



Parking



Factory



# Infinia Model

(DM-703)

<b>Wattage-Flood</b>	30W	45W	50W	72W	100W	150W	200W	250W
<b>Wattage-Street</b>	24W	36W	45W	50W	100W	150W	200W	
<b>I/P Voltage Range</b>	AC 85-300V@50Hz							
<b>Color Temperature</b>	3000-6500 K							
<b>CRI</b>	>80							
<b>Lumens</b>	OSRAM / BRIDGELUX 5050 LED							
<b>Ingress Protection</b>	IP65							
<b>Surge Protection</b>	Internal surge upto 6kv. External 10kv as per Required							
<b>Operation Temp</b>	-10° to 50° C							
<b>Housing</b>	Die Cast Aluminum							
<b>Protection</b>	Over Voltage Protection , Above 320V Auto Cutoff Short Circuit Protection , Over Temperature Protection							
<b>Power Factor</b>	>0.90							
<b>Warranty</b>	2 Years							

## Applications





# Prism Flood

(DM-801)

# Optix Flood

(DM-802)

<b>Wattage-Prism Flood</b>	30W	50W	100W	150W	200W	250W	300W	350W	400W
<b>Wattage-Optix Flood</b>	50W	100W	150W	200W					
<b>I/P Voltage Range</b>	AC 85-300V@50Hz								
<b>Color Temperature</b>	3000-6500 K								
<b>CRI</b>	>80								
<b>Lumens</b>	Up to 140 lumens/Watt								
<b>Ingress Protection</b>	IP65								
<b>Surge Protection</b>	Internal surge upto 6kv. External 10kv as per Required								
<b>Operation Temp</b>	-10° to 50° C								
<b>Housing</b>	Die Cast Aluminum								
<b>Protection</b>	Over Voltage Protection , Above 320V Auto Cutoff Short Circuit Protection , Over Temperature Protection								
<b>Power Factor</b>	>0.90								
<b>Warranty</b>	2 Years								

## Applications



Petrol Pump



Railway Station



Parking



Stadium



Airport



Factory





# Harmony Flood

(DM-803)

# Invicto High Power Lens Flood

(DM-804)

<b>Wattage-Harmony</b>	30W	50W	100W	150W	200W	250W	300W	350W	400W	500W	600W
<b>Wattage-Invicto</b>	100W	200W	300W	400W	500W	600W					
<b>I/P Voltage Range</b>	AC 85-300V@50Hz										
<b>Color Temperature</b>	3000-6500 K										
<b>CRI</b>	>80										
<b>Lumens</b>	Up to 140 lumens/Watt										
<b>Ingress Protection</b>	IP65										
<b>Surge Protection</b>	Internal surge upto 6kv. External 10kv as per Required										
<b>Operation Temp</b>	-10° to 50° C										
<b>Housing</b>	Die Cast Aluminum										
<b>Protection</b>	Over Voltage Protection , Above 320V Auto Cutoff Short Circuit Protection , Over Temperature Protection										
<b>Power Factor</b>	>0.90										
<b>Warranty</b>	2 Years										

## Applications



Petrol Pump



Railway Station



Parking



Stadium



Airport



Factory







# Spectrum Duos Flood

(DM-805)

# Rainbow RGB Flood

(DM-806)

<b>Wattage-Spectrum</b>	150W 2 IN 1	200W 2 IN 1	200W 3 IN 1
<b>Wattage-Rainbow</b>	50W	100W	200W
<b>I/P Voltage Range</b>	AC 85-300V@50Hz		
<b>Color Temperature</b>	3000-6500 K		
<b>CRI</b>	>80		
<b>Lumens</b>	Up to 140 lumens/Watt		
<b>Ingress Protection</b>	IP65		
<b>Surge Protection</b>	Internal surge upto 6kv. External 10kv as per Required		
<b>Operation Temp</b>	-10° to 50° C		
<b>Housing</b>	Die Cast Aluminum		
<b>Protection</b>	Over Voltage Protection , Above 320V Auto Cutoff Short Circuit Protection , Over Temperature Protection		
<b>Power Factor</b>	>0.90		
<b>Warranty</b>	2 Years		

## Applications



Petrol Pump



Railway Station



Parking



Stadium



Airport



Factory





## Crome HighBay (DM-901)

## Lenza Well Glass (DM-902)

<b>Wattage - Crome</b>	50W	100W	150W	200W	250W	300W
<b>Wattage - Lenza</b>	50W	80W	150W			
<b>I/P Voltage Range</b>	AC 85-300V@50Hz					
<b>Color Temperature</b>	3000-6500 K					
<b>CRI</b>	>80					
<b>Lumens</b>	Up to 140 lumens/Watt					
<b>Surge Protection</b>	Internal surge upto 6kv. External 10kv as per Required					
<b>Operation Temp</b>	-10° to 50° C					
<b>Housing</b>	Die Cast Aluminum					
<b>Protection</b>	Over Voltage Protection , Above 320V Auto Cutoff Short Circuit Protection , Over Temperature Protection					
<b>Power Factor</b>	>0.90					
<b>Warranty</b>	2 Years					

## Applications



Railway Station



Stadium



Airport



# Photon Single Side

(DM-1001)

# Solarix Double Side

(DM-1002)

<b>Wattage-Photon</b>	30W	60W	90W	120W
<b>Wattage-Solarix</b>	50W	75W	100W	
<b>Charging Time</b>	6-8 HOURS			
<b>Sustainable Lighting</b>	8-10 HOURS			
<b>Battery Type</b>	Lithium iron phosphate			
<b>Radar &amp; Remote Control System:</b>	<p>Radar Sensor Functionality: This advanced radar sensor intelligently adjusts lighting based on movement. When it detects the presence of people, it activates at full brightness (100%). In the absence of movement, it conserves energy by dimming to a soft 30% brightness.</p> <p>Always-On Mode: For situations requiring constant illumination, the system can be set to "Always On" mode, providing full brightness at all times.</p> <p>This combination of features ensures optimal lighting while maximizing energy efficiency.</p>			
<b>Material</b>	ABS+PC			

- Day Light Sensor
- PIR Sensor
- With Remote Control
- IP 65



Streets



High Way



Petrol Pump



Railway Station



Parking



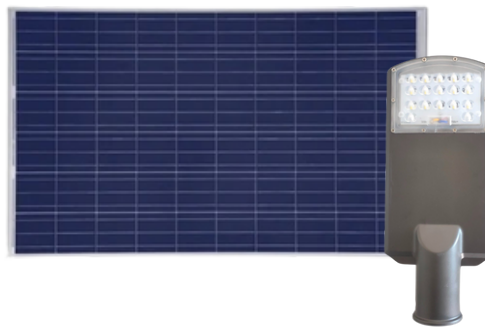
Factory



IS 10322 (PART 5) SEC 3: 2012



7200340



## All in One

Solar LED Street Light

(DM-1003)

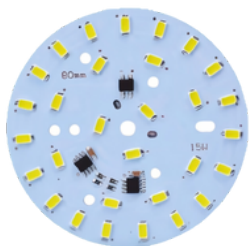
## Semi Integrated

Solar LED Street Light

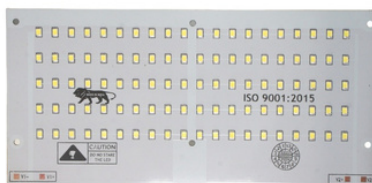
(DM-1004)

<b>Wattage</b>	12W	15W	18W	24W	30W	40W	50W	60W	80W	100W
<b>Battery Capacity</b>	6AH	12AH	18AH	24AH	36AH	42AH	48AH			
<b>Battery Voltage</b>	12.8V , 25.6V									
<b>Battery Type</b>	Lifepo4									
<b>Solar Panel</b>	40W-200W									
<b>Sensor</b>	Auto Dusk to Down Sensor , Motion Sensor , Programmable Dimming									

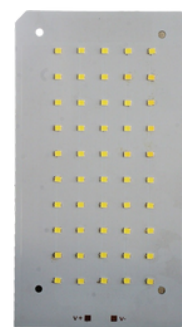
## PCB



Panel Light PCB



Flood Light PCB



Street Light PCB

### Product Parameters

01. Board Thickness: 0.7-2.0 mm
02. Solder Mask Colour: Blue White, Rise White, Green, Blue, Red, Black
03. Legend Colour: White, Yellow, Black, Green
04. Material : FR-1, FR-4, Metal core Aluminum PCB (MCPCB)
05. Copper Thickness of Base Material: 15micron, 18micron, 25micron, 35micron
06. Withstand Voltage : 1000-4000V
07. Thermal Conduction: 0.6W-3W

- PCB Design
- PCB Manufacturing
- PCB Assembly
- All Types of Light Solutions



**Solar Motion Wall Light**

AVAILABLE COLOUR  
WH



**Solar Motion 4-Way Wall Light**

AVAILABLE COLOUR  
WH



**Solar UFO Lamp**

AVAILABLE COLOUR  
WW + RGB



**Solar V-Shape Wall Light**

AVAILABLE COLOUR  
RGB



**Solar UP-DOWN Wall Light**

AVAILABLE COLOUR  
WW



**Solar Step Wall Light**

AVAILABLE COLOUR  
WH + WW



**Solar Motion Sensor Detector Light**

AVAILABLE COLOUR  
WH



**Solar Moonlit Pathway Light**

AVAILABLE COLOUR  
WW



**Solar Pathway Light**

AVAILABLE COLOUR  
WW



**Solar Lanter Light**

AVAILABLE COLOUR  
WW



**Solar Mashaal Light**

AVAILABLE COLOUR  
WW



**Solar Garden Light**

AVAILABLE COLOUR  
WW / RGB



**Solar Jellyfish Light**

AVAILABLE COLOUR  
Colorful



**Solar Big Disc Light**

AVAILABLE COLOUR  
RGB



**Solar RGB Flower Light**

AVAILABLE COLOUR  
RGB



**Solar Crystal Ball Light**

AVAILABLE COLOUR  
Colourful



**Solar Sun Flower Light**

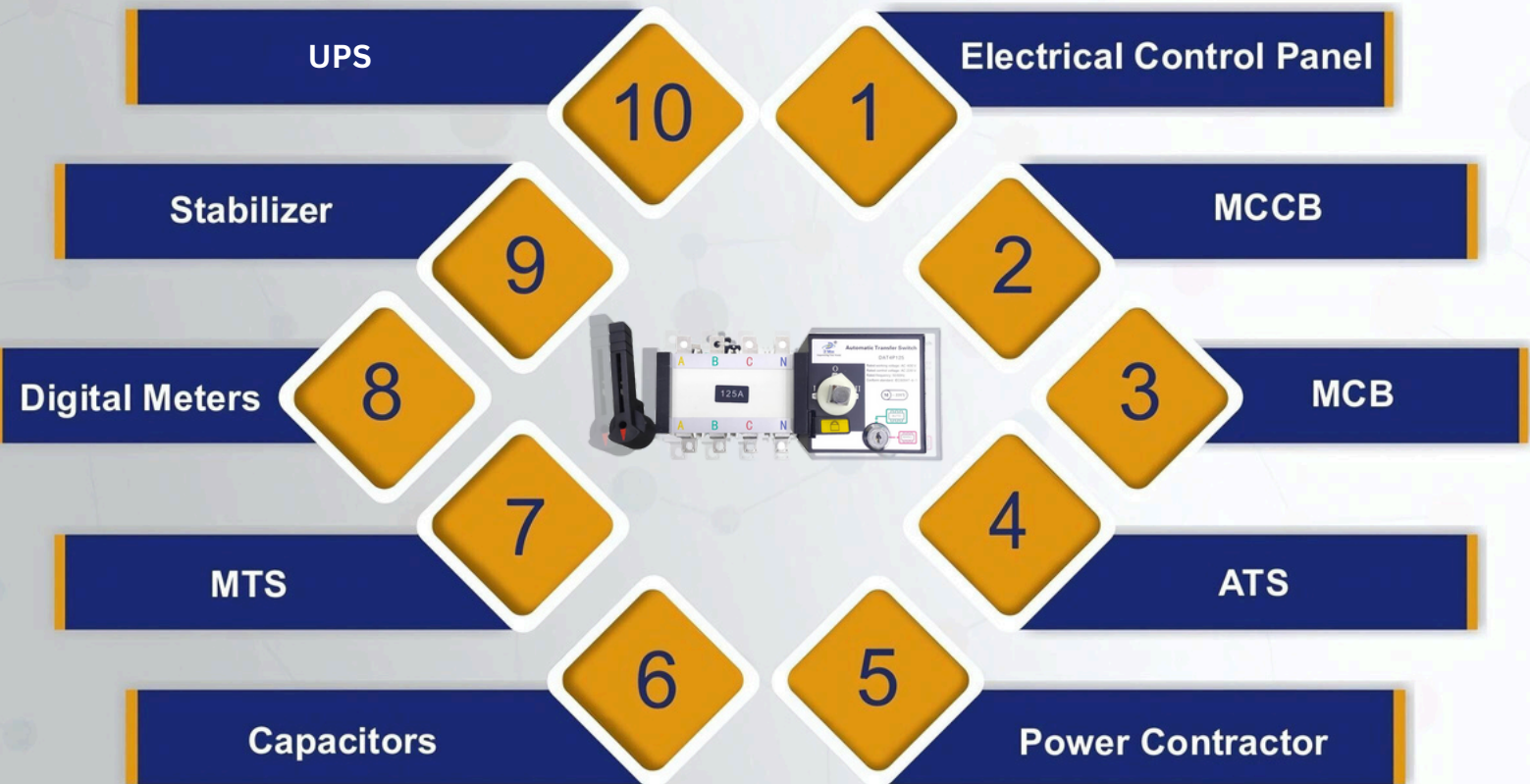
AVAILABLE COLOUR  
Colorful



**Solar Strings Light**

AVAILABLE COLOUR  
WW

# Electrical Control Panel



- **Govt. Approved (CPRI) Control Panel Manufacturer**



# Our Clients



GUJARAT STATE ELECTRICITY LTD.



ROADS AND BUILDINGS DEPARTMENT  
GOVERNMENT OF GUJARAT



ગુજરાત રાજ્ય નાગરિક પુરવઠા નિગમ લી.  
અ. નાગરિક પુરવઠા સંબંધિત માહિતી મેળવવા માટે, સુધરત ઠરાવ






# D'MAK ENERGIA PVT LTD GUJARAT



 [www.dmakindia.com](http://www.dmakindia.com)

 E-7+8/12, GIDC Rd, nr. Amtech Electronics India Limited,  
GIDC Electronic Estate, Sector 26,  
Gandhinagar, Gujarat 382028

 +91-99987 87956

 +91-70960 15305

 [marketing@dmakgroup.com](mailto:marketing@dmakgroup.com)  
[sales@dmakgroup.com](mailto:sales@dmakgroup.com)